



What's New P6 EPPM R8.2

Primavera Product Strategy
Eileen Schurmann

3 topics today





Enterprise

We
heard
you!



P6 for everyone!



ORACLE®



Enterprise



Performance & Scalability

Larger Deployments



Different locations





In the field



Need speed

Performance Team





Upto 80%
faster



Enterprise

Ease of Deployment



Installation wizard



Copy toolbars & User Preference



Automate Resource Creation

ORACLE Primavera P6

Dashboards ▾ Portfolios ▾ Projects ▾ Resources ▾

User Access

Users

Users

- OBS
- Global Security Profiles
- Project Security Profiles

Login Name

- admin
- karen

Module Access

Module

- Enterprise Reports
- Integration API
- P6 Analytics
- P6 Professional
- Portfolios
- Progress Reporter
- Projects
- Resources

Select Parent Resource

View Resources by: All Resources ▾

Search

- E&C Resources - E&C Resources
- Product Dev - Product Development Resources
- IT - Information Technology Group
- Material - Material Resources
- NL Res - NL Res

Add Cancel



Enterprise

Oracle Locator



Location Data

ORACLE Primavera P6

Dashboards ▾

Portfolios ▾

Projects ▾

Resources ▾

Enterprise Data

Global

Currencies

Financial Periods

Global Calendars

Locations

Resource Codes

Timesheet Periods

Projects

Baseline Types

Funding Sources

Notebook Topics

Project Calendars

Project Codes

Project UDFs

WBS Categories

WBS UDFs

Activities

Activity Codes - EPS

Activity Codes - Global

Activity Codes - Project

Activity UDFs

Locations

Icons for location management: Add, Edit, Delete, etc.

Table headers: Name, Street, Street 2, City, State/Province

Table row: Oracle Office

Add Location

Enter an address or latitude/longitude coordinates

Name *

Street

City

State/Province

Postal Code

Country

United States

Latitude

Longitude

Locate

* required fields

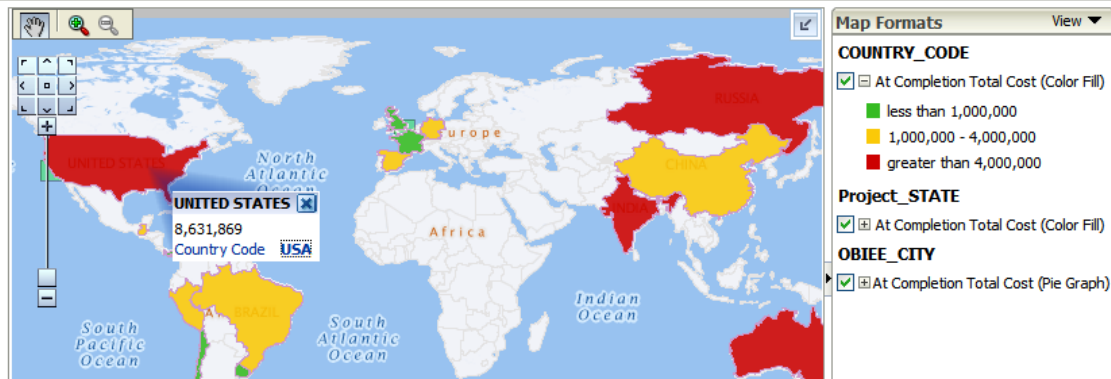
Help

Add

Cancel

ORACLE

At Completion Total Cost by Location

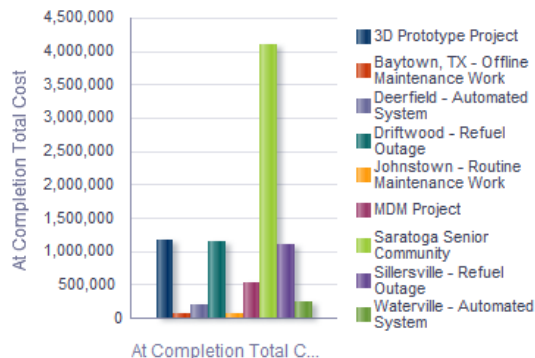


Cost Breakout by Location

Country Code **USA**

Country Code **USA**

At Completion Total Cost



Project Name	City	At Completion Labor Cost	At Completion Nonlabor Cost	At Completion Material Cost	At Completion Expense Cost	At Completion Total Cost
3D Prototype Project	SAN FRANCISCO	337,534			829,500	1,167,034
Baytown, TX - Offline Maintenance Work	BAYTOWN	70,664			250	70,914
Deerfield - Automated System	TAMPA	186,157	3,200		17,550	206,907
Driftwood - Refuel Outage	BALTIMORE	1,057,764			92,000	1,149,764
Johnstown - Routine Maintenance Work	WICHITA	75,960				75,960
MDM Project	NEW YORK	413,987			121,500	535,487
Saratoga Senior Community	PHILADELPHIA	4,095,450		0	0	4,095,450
Sillersville - Refuel Outage	VIRGINIA BEACH	1,003,964			90,000	1,093,964
Waterville - Automated System	NEW ORLEANS	214,588	3,200		18,600	236,388
Grand Total		7,456,069	6,400	0	1,169,400	8,631,869



Enterprise



Performance & Scalability



Ease of Deployment



Oracle Locator



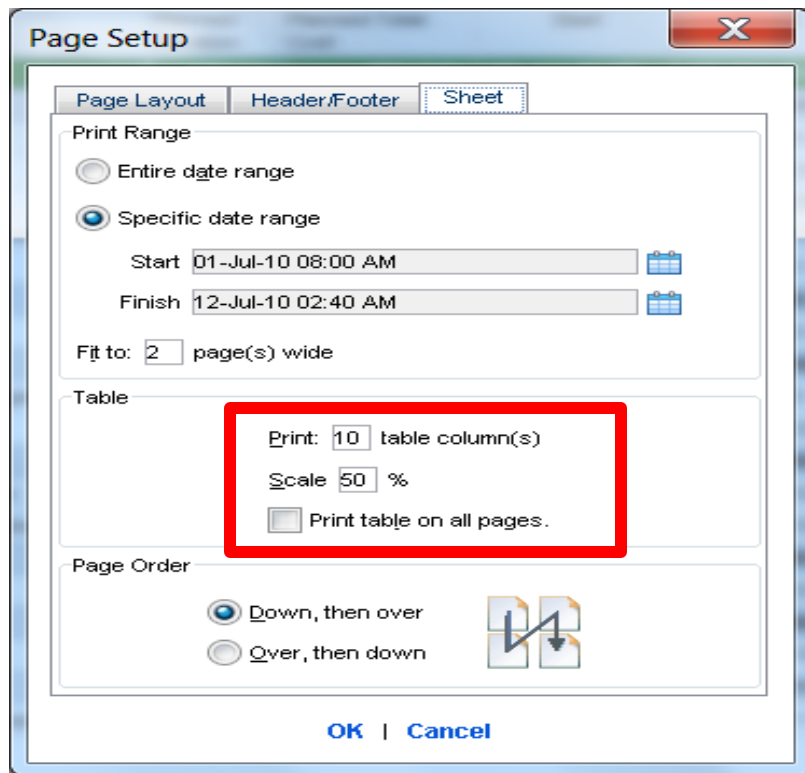
We
heard
you!





User friendly

Printing Enhancements





Column search

User Productivity Kit





Pre-packaged Primavera tutorials

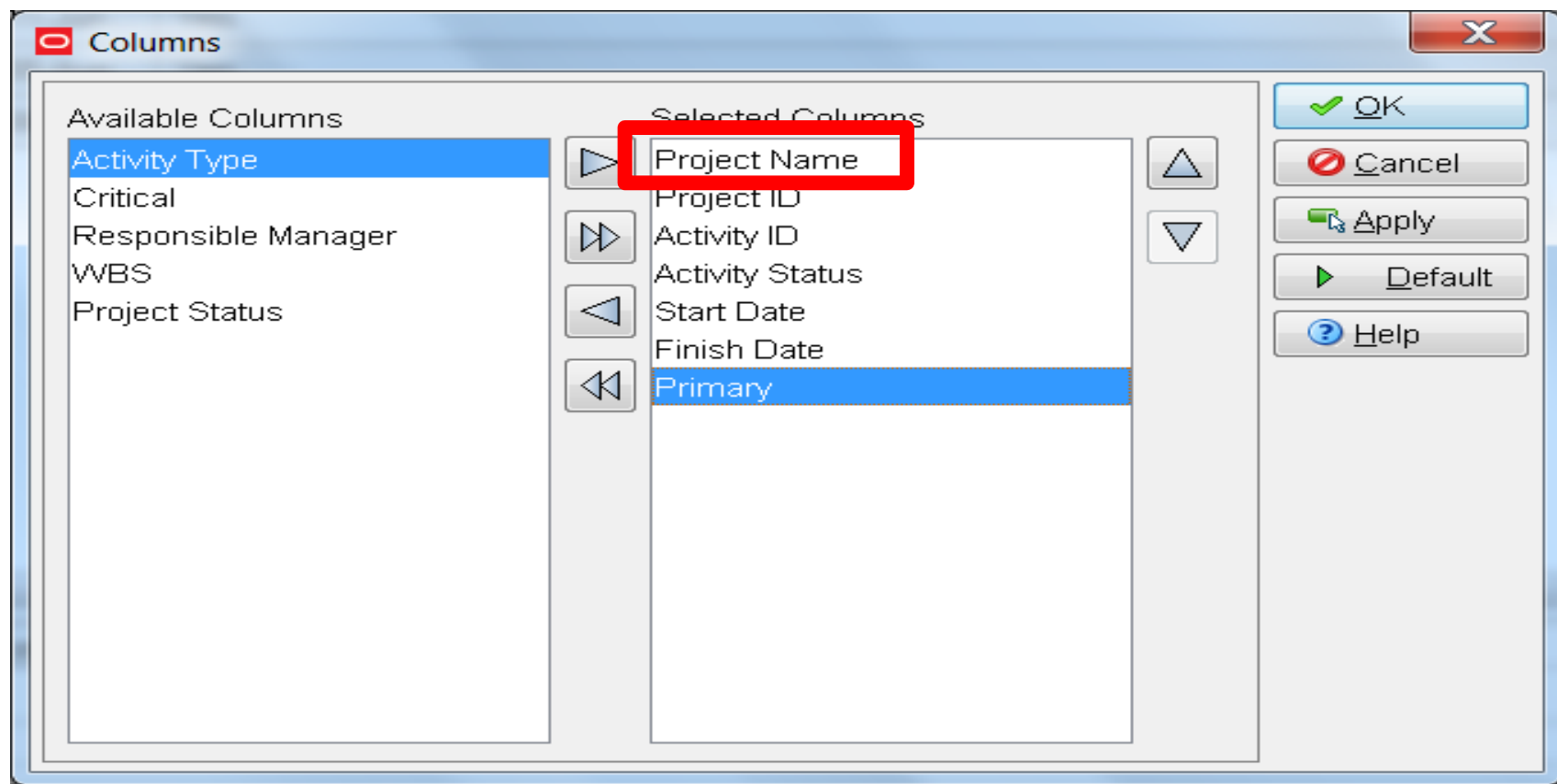
New features, view only what you need





Progress Reporter

Project Name in Progress Reporter



Updated icons in Progress Reporter

Primavera P6 Progress Reporter [pgbu1]

File Action View Help

Timesheet Period: 01-Jan-2012 - 31-Jan-2012 Timesheet Status: Active

Activity Na...	Activity... ▲	Project ID	Sun 01-Jan	Mon 02-Jan	Tue 03-Jan	Wed 04-Jan
Define ...	IT1030	IT00829				
Design ...	IT1050	IT00783				
Develo...	IT1060	IT00351				
Develo...	IT1060	IT00731				

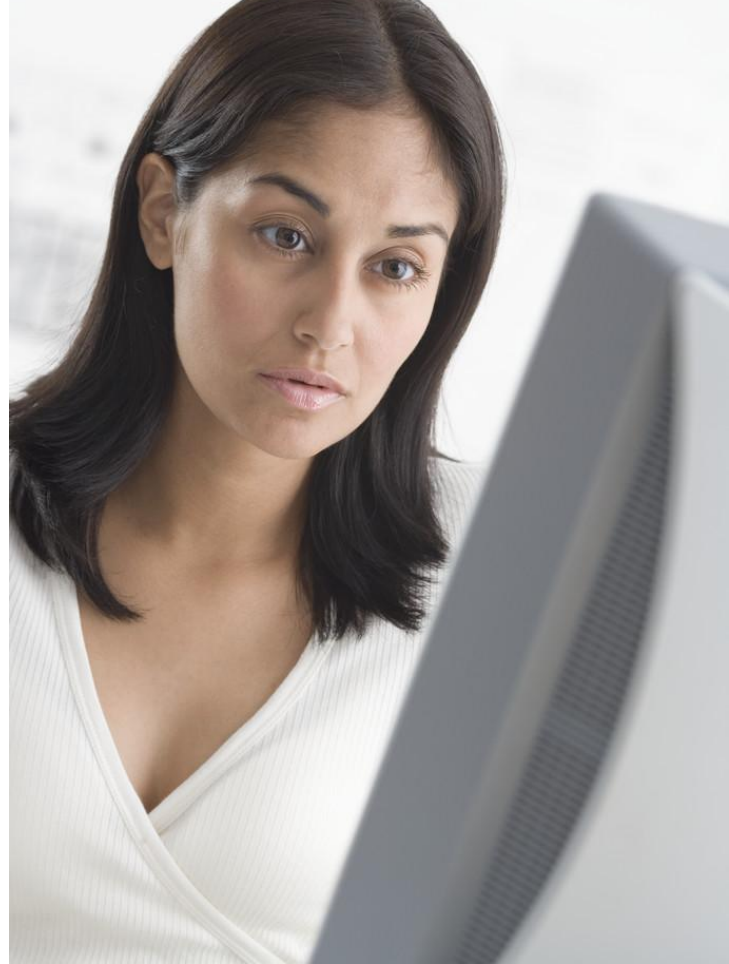


Web has it!

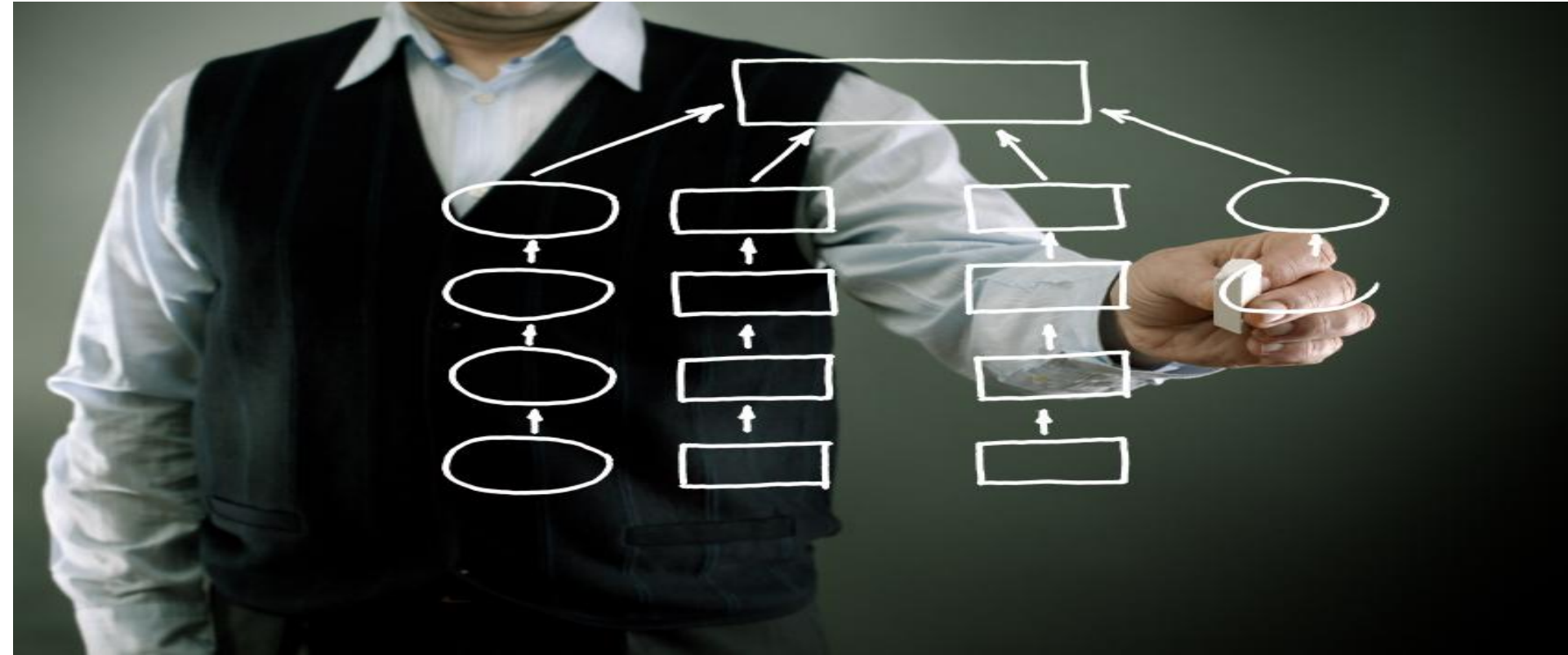


http://www

Exclusive Mode



1998, 1999, 2000, 2001, 2002, 2003, 2004, 2005, 2006, 2007, 2008, 2009, 2010, 2011, 2012, 2013, 2014, 2015, 2016, 2017, 2018, 2019, 2020, 2021, 2022, 2023, 2024, 2025, 2026, 2027, 2028, 2029, 2030, 2031, 2032, 2033, 2034, 2035, 2036, 2037, 2038, 2039, 2040, 2041, 2042, 2043, 2044, 2045, 2046, 2047, 2048, 2049, 2050, 2051, 2052, 2053, 2054, 2055, 2056, 2057, 2058, 2059, 2060, 2061, 2062, 2063, 2064, 2065, 2066, 2067, 2068, 2069, 2070, 2071, 2072, 2073, 2074, 2075, 2076, 2077, 2078, 2079, 2080, 2081, 2082, 2083, 2084, 2085, 2086, 2087, 2088, 2089, 2090, 2091, 2092, 2093, 2094, 2095, 2096, 2097, 2098, 2099, 2100, 2101, 2102, 2103, 2104, 2105, 2106, 2107, 2108, 2109, 2110, 2111, 2112, 2113, 2114, 2115, 2116, 2117, 2118, 2119, 2120, 2121, 2122, 2123, 2124, 2125, 2126, 2127, 2128, 2129, 2130, 2131, 2132, 2133, 2134, 2135, 2136, 2137, 2138, 2139, 2140, 2141, 2142, 2143, 2144, 2145, 2146, 2147, 2148, 2149, 2150, 2151, 2152, 2153, 2154, 2155, 2156, 2157, 2158, 2159, 2160, 2161, 2162, 2163, 2164, 2165, 2166, 2167, 2168, 2169, 2170, 2171, 2172, 2173, 2174, 2175, 2176, 2177, 2178, 2179, 2180, 2181, 2182, 2183, 2184, 2185, 2186, 2187, 2188, 2189, 2190, 2191, 2192, 2193, 2194, 2195, 2196, 2197, 2198, 2199, 2200, 2201, 2202, 2203, 2204, 2205, 2206, 2207, 2208, 2209, 2210, 2211, 2212, 2213, 2214, 2215, 2216, 2217, 2218, 2219, 2220, 2221, 2222, 2223, 2224, 2225, 2226, 2227, 2228, 2229, 2230, 2231, 2232, 2233, 2234, 2235, 2236, 2237, 2238, 2239, 2240, 2241, 2242, 2243, 2244, 2245, 2246, 2247, 2248, 2249, 2250, 2251, 2252, 2253, 2254, 2255, 2256, 2257, 2258, 2259, 2260, 2261, 2262, 2263, 2264, 2265, 2266, 2267, 2268, 2269, 2270, 2271, 2272, 2273, 2274, 2275, 2276, 2277, 2278, 2279, 2280, 2281, 2282, 2283, 2284, 2285, 2286, 2287, 2288, 2289, 2290, 2291, 2292, 2293, 2294, 2295, 2296, 2297, 2298, 2299, 2300, 2301, 2302, 2303, 2304, 2305, 2306, 2307, 2308, 2309, 2310, 2311, 2312, 2313, 2314, 2315, 2316, 2317, 2318, 2319, 2320, 2321, 2322, 2323, 2324, 2325, 2326, 2327, 2328, 2329, 2330, 2331, 2332, 2333, 2334, 2335, 2336, 2337, 2338, 2339, 2340, 2341, 2342, 2343, 2344, 2345, 2346, 2347, 2348, 2349, 2350, 2351, 2352, 2353, 2354, 2355, 2356, 2357, 2358, 2359, 2360, 2361, 2362, 2363, 2364, 2365, 2366, 2367, 2368, 2369, 2370, 2371, 2372, 2373, 2374, 2375, 2376, 2377, 2378, 2379, 2380, 2381, 2382, 2383, 2384, 2385, 2386, 2387, 2388, 2389, 2390, 2391, 2392, 2393, 2394, 2395, 2396, 2397, 2398, 2399, 2400, 2401, 2402, 2403, 2404, 2405, 2406, 2407, 2408, 2409, 2410, 2411, 2412, 2413, 2414, 2415, 2416, 2417, 2418, 2419, 2420, 2421, 2422, 2423, 2424, 2425, 2426, 2427, 2428, 2429, 2430, 2431, 2432, 2433, 2434, 2435, 2436, 2437, 2438, 2439, 2440, 2441, 2442, 2443, 2444, 2445, 2446, 2447, 2448, 2449, 2450, 2451, 2452, 2453, 2454, 2455, 2456, 2457, 2458, 2459, 2460, 2461, 2462, 2463, 2464, 2465, 2466, 2467, 2468, 2469, 2470, 2471, 2472, 2473, 2474, 2475, 2476, 2477, 2478, 2479, 2480, 2481, 2482, 2483, 2484, 2485, 2486, 2487, 2488, 2489, 2490, 2491, 2492, 2493, 2494, 2495, 2496, 2497, 2498, 2499, 2500, 2501, 2502, 2503, 2504, 2505, 2506, 2507, 2508, 2509, 2510, 2511, 2512, 2513, 2514, 2515, 2516, 2517, 2518, 2519, 2520, 2521, 2522, 2523, 2524, 2525, 2526, 2527, 2528, 2529, 2530, 2531, 2532, 2533, 2534, 2535, 2536, 2537, 2538, 2539, 2540, 2541, 2542, 2543, 2544, 2545, 2546, 2547, 2548, 2549, 2550, 2551, 2552, 2553, 2554, 2555, 2556, 2557, 2558, 2559, 2560, 2561, 2562, 2563, 2564, 2565, 2566, 2567, 2568, 2569, 2570, 2571, 2572, 2573, 2574, 2575, 2576, 2577, 2578, 2579, 2580, 2581, 2582, 2583, 2584, 2585, 2586, 2587, 2588, 2589, 2590, 2591, 2592, 2593, 2594, 2595, 2596, 2597, 2598, 2599, 2600, 2601, 2602, 2603, 2604, 2605, 2606, 2607, 2608, 2609, 2610, 2611, 2612, 2613, 2614, 2615, 2616, 2617, 2618, 2619, 2620, 2621, 2622, 2623, 2624, 2625, 2626, 2627, 2628, 2629, 2630, 2631, 2632, 2633, 2634, 2635, 2636, 2637, 2638, 2639, 2640, 2641, 2642, 2643, 2644, 2645, 2646, 2647, 2648, 2649, 2650, 2651, 2652, 2653, 2654, 2655, 2656, 2657, 2658, 2659, 2660, 2661, 2662, 2663, 2664, 2665, 2666, 2667, 2668, 2669, 2670, 2671, 2672, 2673, 2674, 2675, 2676, 2677, 2678, 2679, 26



Microsoft Interoperability



MSP XML Import Updates

Primavera P6 - Import/Export Project - Windows Internet Explorer

Import Export Status

Import Type: Microsoft Project XML

Import File: C:\Users\steele\PRIMAVERA\Documents\wres... Browse...

Microsoft Project Template: MSP Mapping

Select Import Action

☐ Create New Project Select EPS: []

☒ Update Existing Project Select Project: []

Basic

Modify the selected options by choosing the action to take when the same data exists in the import file and project being updated. Check Delete to delete those values in the database that are not contained in the file you are importing.

Global Data		Project Data		
Name	Import Action	Name	Import Action	Delete
Project Codes and Values	Keep Existing	Project Calendars	Keep Existing	
Funding Sources	Keep Existing	WBS	Update Existing	<input type="checkbox"/>
Resource Curves	Keep Existing	Project Activity Codes and Values	Update Existing	
Resource Codes and Values	Keep Existing	Project Thresholds	Update Existing	<input type="checkbox"/>
Shift Names	Keep Existing	Activities and Resource Assignments	Update Existing	<input type="checkbox"/>
User Defined Fields	Keep Existing	Risks	Update Existing	
Cost Accounts	Keep Existing	High Level Planning Assignments	Update Existing	

Help Import Cancel



Additional Enhancements

- Dissolve Activity
- Additional columns available for Predecessor/Successor tabs
- Cut/Copy/Paste WBS

We
heard
you!





But even after all that...



**“I STILL
WANT
THE
CLIENT!”**

Single Install



Line Numbering in Client

Primavera P6 Professional R8.2 : EC00515 (City Center Office Building Addition)

File Edit View Project Enterprise Tools Admin Help

Activities

Layout: Classic Schedule Layout Filter: All Activities

Line Numbers

#	Activity ID	Original Duration	Remaining Duration	Schedule % Complete	Start	Finish	Re
1	C1000	55	0	100%	01-Nov-10 A	19-Jan-11 A	Pa
2	C1010	0	0	100%	01-Nov-10 A		Pa
3	C1030	22	0	100%	17-Jan-11 A	17-Feb-11 A	Pa
4	C1040	0	0	100%	17-Feb-11 A		Pa
5	C1050	7	0	100%	16-Feb-11 A	25-Feb-11 A	Pa
6	C1060	0	0	100%	25-Feb-11 A		Pa
7	C1070	30	0	100%	28-Feb-11 A	13-Apr-11 A	Pa
8	C1080	28	0	100%	25-Feb-11 A	11-Apr-11 A	Pa
9	C1090	0	0	100%	28-Feb-11 A		Pa
10	C1100	43	0	100%	23-Feb-11 A	18-Apr-11 A	Ex
11	C1160	27	0	100%	24-Feb-11 A	06-Apr-11 A	Pa
12	C1170	24	5	100%	04-Apr-11 A	06-May-11	Pri
13	C1180	15	0	100%	18-Mar-11 A	13-Apr-11 A	Pri
14	C1190	15	2	100%	14-Apr-11 A	04-May-11	Pri
15	C1220	15	0	100%	08-Apr-11 A	28-Apr-11 A	Pri
16	C1230	24	24	41.67%	02-May-11	06-Jun-11	Ex
17	C1240	10	10	79.17%	04-May-11	17-May-11	Pri

#	Activity ID	Original Duration	Remaining Duration	Schedule % Complete	Start	Finish	Re
1	EC1000	55	0	100%	01-Nov-10 A	19-Jan-11 A	Pa
2	EC1010	0	0	100%	01-Nov-10 A		Pa
3	EC1030	22	0	100%	17-Jan-11 A	17-Feb-11 A	Pa

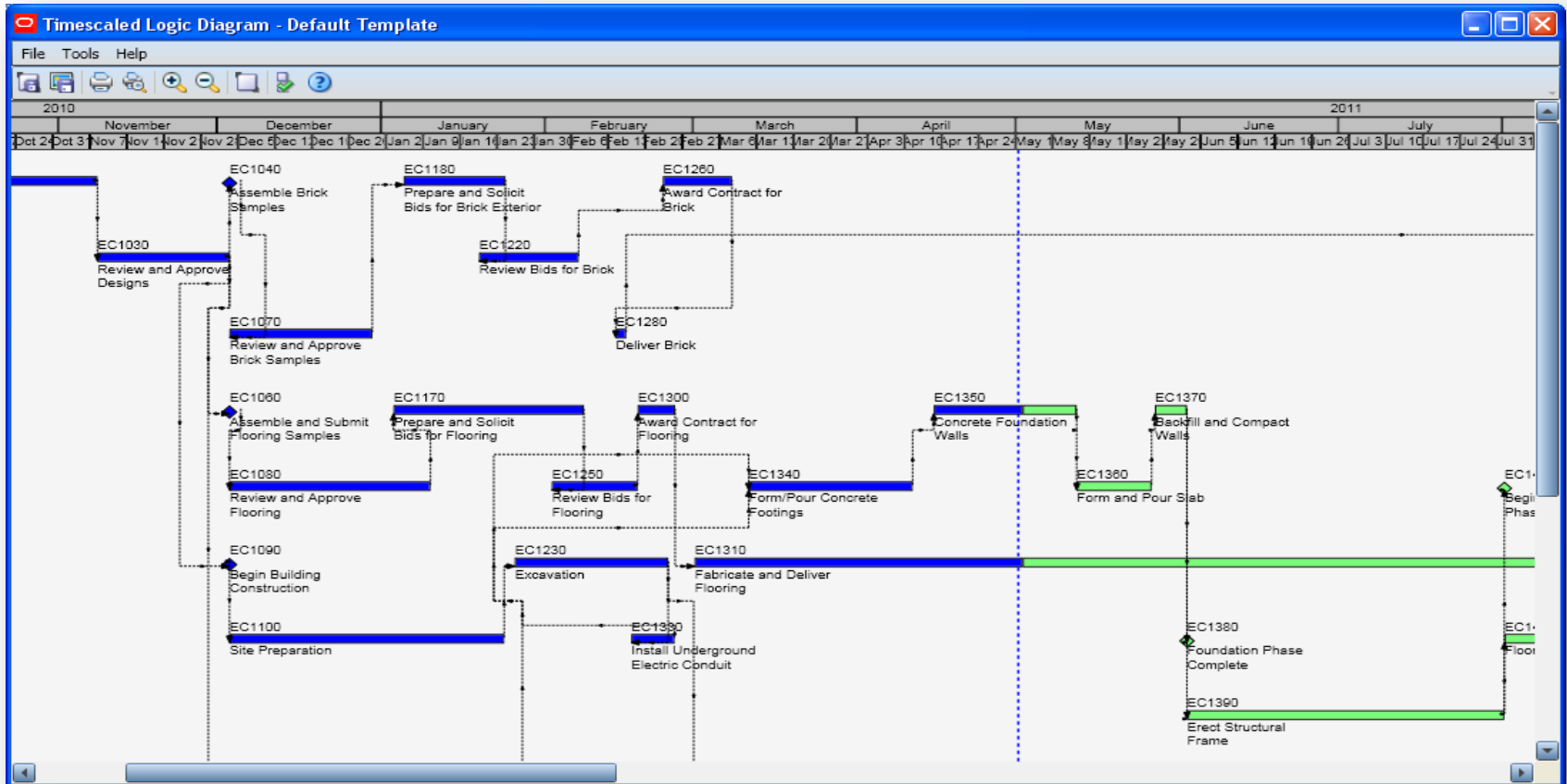
November 2010

31 07 14 21

Start Office Building

Remaining Labor Units 10 21

Timescaled Logic Enhancements



We
heard
you!





User friendly



Web has it!



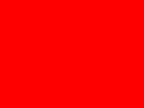
http://www



**“I STILL
WANT
THE
CLIENT!”**

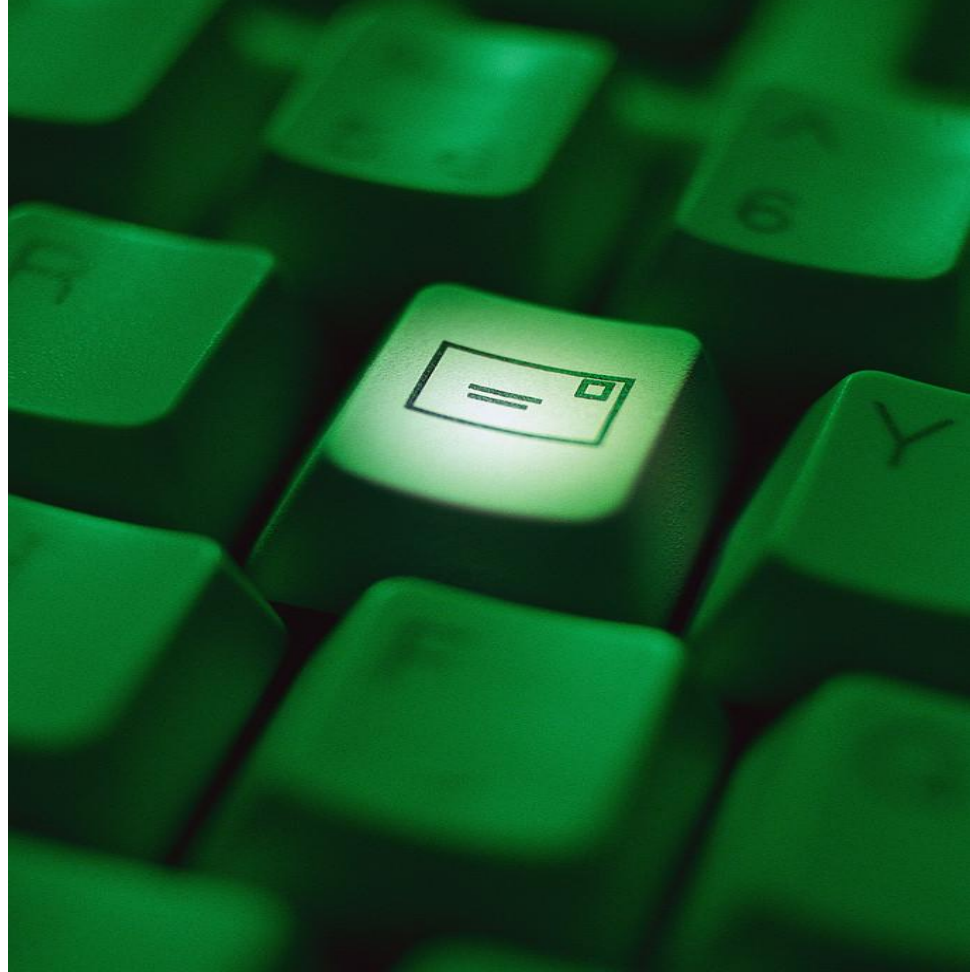
P6 for everyone!





How do you collect status today?

E-mail



Hand written



ORACLE



Conversations



Then What?

Scrub Data



Enter data





Time consuming

Out of date





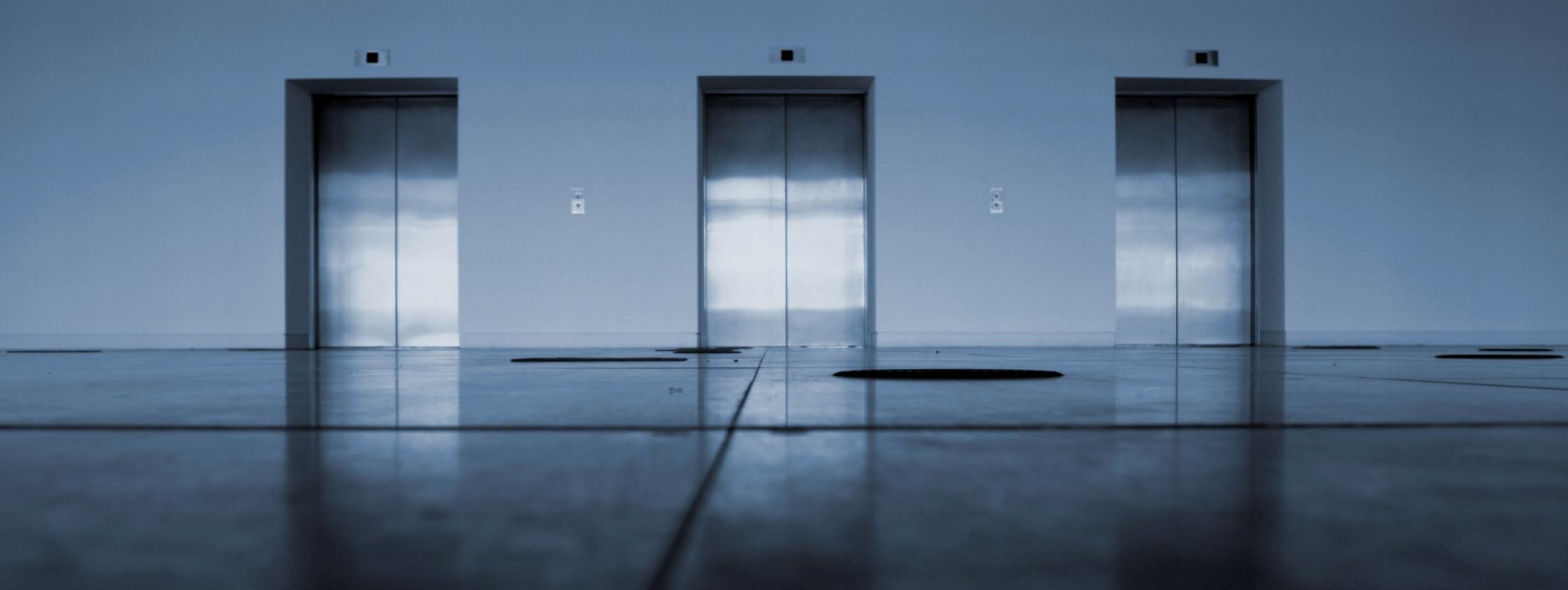
What could PMs be doing?

Manage projects
Solving problems
Identifying trends



A photograph of a modern, minimalist hallway with three closed elevator doors. The doors are made of reflective metal and are set into a light-colored wall. The floor is highly polished and reflects the doors and the wall. The lighting is soft and even, creating a clean, professional atmosphere. The text "3 Choices: Web, Email, Mobile" is overlaid in white on the lower half of the image.

3 Choices: Web, Email, Mobile



Door number 1: Web

Team Member Web App

ORACLE P6 Team Member

Welcome eileen Preferences Help Logout

Show my tasks in All projects that are Active 11 tasks found



IT1000 - Explore Opportunity

Project: Zenith Continuity Program
WBS: Initiation Phase

Started: Apr-30-2012
Finish By: May-08-2012



IT1010 - Define Project Charter

Project: Zenith Continuity Program
WBS: Planning Phase

Started: Mar-13-2012
Finish By: Jun-05-2012



IT1030 - Define Business Requirements *

Project: Zenith Continuity Program
WBS: Requirements Phase

Started: Aug-06-2012
Finish By: Sep-24-2012



IT1030 - Define Business Requirements *

Started: Aug-06-2012

Finish By: Sep-24-2012

Time Spent: 2d 0hr

Time Left: 5d 1hr

Undo

Steps

Review scope and ob... 100 % Complete ✓

Conduct business re... 0 % Complete ✓

Create outline of requ... 0 % Complete ✓

Clearly define the bu... 0 % Complete ✓

Undo

More...

Related Tasks

Predecessors (1)

IT9002 - Gate 1 - Proj... Start By: Jul-31-2012
Finish By: Jul-31-2012

IT1080 - Implement System

Project: Employee Onboarding Portal
WBS: Implementation Phase

Start By: Aug-09-2012
Finish By: Nov-14-2012

IT1080 - Implement System

Project: ACH Integration Project
WBS: Implementation Phase

Start By: Sep-11-2012
Finish By: Dec-18-2012

IT1080 - Implement System

Project: ACH Integration Project
WBS: Implementation Phase

Start By: Sep-11-2012
Finish By: Dec-18-2012

...and it
looks
GREAT
on a
tablet





508 Compliant!



All Languages

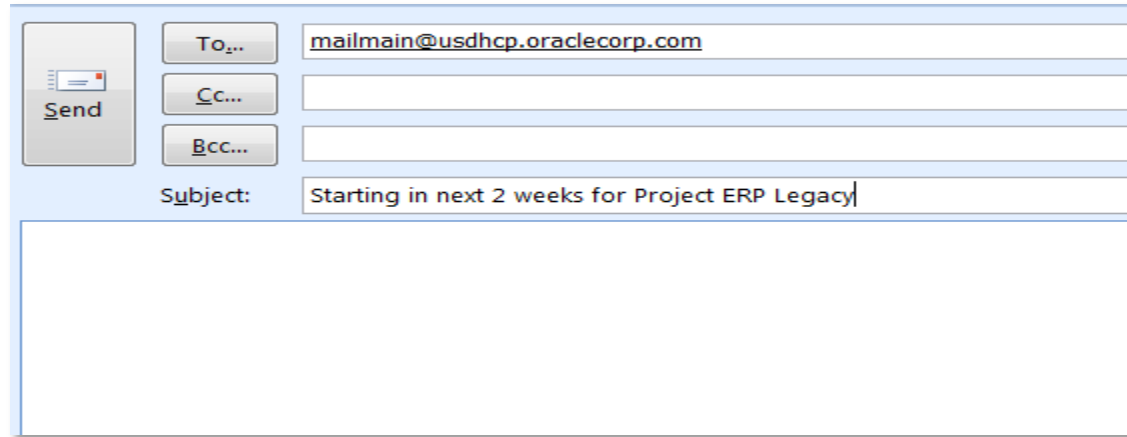
Italian!




A photograph of a hallway with three elevator doors. The scene is dimly lit with a strong blue color cast. The floor is highly reflective, mirroring the doors and the light from the windows above. The text 'Door number 2: Email' is overlaid in white on the lower half of the image.

Door number 2: Email

P6 Email



The screenshot shows an email composition window with a light blue header and a white body. On the left side of the header, there is a 'Send' button with a paper plane icon. To the right of the 'Send' button are three buttons: 'To...', 'Cc...', and 'Bcc...'. The 'To...' button is selected, and its corresponding text field contains the email address 'mailmain@usdhcp.oraclecorp.com'. The 'Cc...' and 'Bcc...' buttons have empty text fields. Below these buttons is a 'Subject:' label followed by a text field containing the text 'Starting in next 2 weeks for Project ERP Legacy'. The main body of the email is a large, empty white rectangular area.

 Send	To...	mailmain@usdhcp.oraclecorp.com
	Cc...	
	Bcc...	
Subject:		Starting in next 2 weeks for Project ERP Legacy
<div></div>		

P6 Email

From: mailman@usdhcp.oraclecorp.com Sent: Tue 6/7/2011 2:26
To: Eileen Schurmann
Cc:
Subject: [Fwd: RE: Your requested P6 Tasks]

Project: ERP Legacy Merge

[Update this task](#)

Define Business Requirements *	Started: 19-Jun-2011
WBS: Requirements Phase	Finish: 11-Aug-2011
Status: In Progress	Time Spent: 0h
Finished(Y/N): N	Time Left: 37d 1.47h

[Update this task](#)

Define System Requirements	Started: 10-Jul-2011
WBS: Requirements Phase	Finish: 26-Oct-2011
Status: In Progress	Time Spent: 1d 2h
Finished(Y/N): N	Time Left: 60d 5.67h

[Update this task](#)

Define System Requirements	Started: 10-Jul-2011
WBS: Requirements Phase	Finish: 26-Oct-2011
Status: In Progress	Time Spent: 0h
Finished(Y/N): N	Time Left: 61d 7.67h

[Update this task](#)

Test System	Start: 11-Jul-2012
--------------------	---------------------------

Activity Owner support

ORACLE Primavera P6

Dashboards ▾

Portfolios ▾

Projects ▾

Resources ▾

EPS Workspace **Activities** Team Usage Issues Risks Documents

Activities of Project Swordfish

Actions ▾ Edit ▾ View ▾



WBS / Activity	Activity Name	Start	Finish	Owner	November 2011			
...	30	06	13	20				



Field customization

A photograph of three elevator doors in a hallway with a blue color scheme. The doors are highly reflective, showing the sky and clouds. The floor is also reflective, mirroring the doors and the ceiling. The lighting is soft and even.

Door number 3: mobile

P6 Team Member iPhone App



Activity Owner support

ORACLE Primavera P6

Dashboards ▾

Portfolios ▾

Projects ▾

Resources ▾

EPS Workspace **Activities** Team Usage Issues Risks Documents

Activities of Project Swordfish

Actions ▾ Edit ▾ View ▾



WBS / Activity	Activity Name	Start	Finish	Owner	November 2011			
					... 30	06	13	20
Key Milestones		06-Apr-11 A	02-Mar-12					
Initiation Phase		30-Mar-11 A	15-Nov-12					
IT1000	Explore Opportunity	04-Apr-11 A	06-Apr-11 A	Carina Bennett				
Scoping Sta...		09-Nov-11	15-Nov-12					
PD1000	Scope New Product Idea	09-Nov-11	16-Nov-11	Carina Bennett				
Structure		09-Nov-11	15-Nov-12					
EC1090	Building Pad Including UG Utils	09-Nov-11	03-Feb-12	Carina Bennett				
EC1140	First Floor Masonry Structure	06-Feb-12	24-Feb-12	Carina Bennett				
EC1170	Second Floor Slab & Collar Beam	27-Feb-12	06-Apr-12	Carina Bennett				
EC1190	Second Floor Masonry Structure	09-Apr-12	27-Apr-12	Carina Bennett				

ORACLE



Field customization



Information coming in faster than ever before



Is it right?



“No way,
they will mess up
everything!”



Control



Project Preferences

Project Preferences of Haitang Corporate Park

Team Member Applications

Status Reviews

☐ Allow reviews for Team Member status updates

☐ Review required by default for new activities

Reviewer

Edit Fields

Select the fields Team Member users can update. Actual Start and Actual Finish are always editable. Remaining Early Finish is always editable for assignments.

Team members are assigned to activities as

☐ Resource Assignments

☒ Activity Owners

☐ Both

Activity Fields

Activity % Complete

Remaining Duration

Activity % Complete

Actual Labor Units

Actual Nonlabor Units

Expected Finish

Remaining Duration

Remaining Labor Units

Remaining Nonlabor Units

View Fields

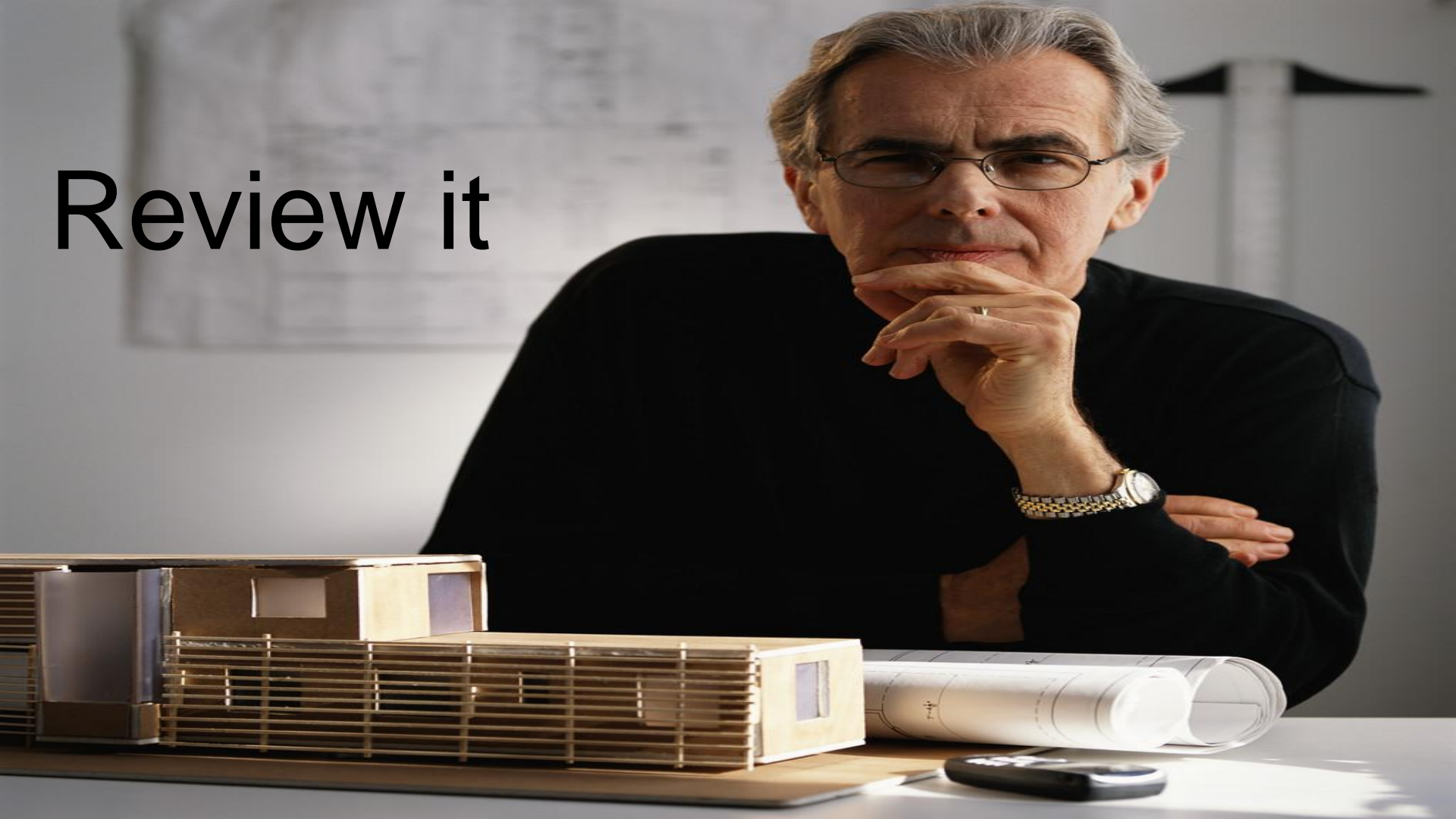
Select the activity codes and UDFs team members can view.

Help Save Save and Close Cancel

A stage with red curtains and a spotlight. The curtains are pulled back, revealing a stage floor. A bright green spotlight illuminates a circular area on the floor.

Stage it

Review it





Update History Tab

Status Update History (from Team Member applications only)

Activity Define Project Charter

Status	Approved By	Approval Date	Submitted By	Submitted Date	Actual Start	Actual Finish	Actual Units	Remaining Units	Remaining Duration
Pending			eileen	04-Nov-11 08:58 AM			2.00d	1.00d	
Approved	eileen	04-Nov-11 08:36 AM	eileen	04-Nov-11 08:36 AM	13-Mar-12 11:00 AM		1.00d	4.00d	

Assignments Codes Expenses Feedback General Issues Notebooks Predecessors Risks Steps Successors Trace Logic **Update History**



Time to your PMs

Manage projects
Solving problems
Identifying trends



A photograph of a modern, minimalist hallway with three closed elevator doors. The doors are made of reflective metal and are set into a light-colored wall. The floor is highly polished and reflects the doors and the wall. The lighting is soft and even, creating a clean, professional atmosphere. The text "3 Choices: Web, Email, Mobile" is overlaid in white on the lower half of the image.

3 Choices: Web, Email, Mobile

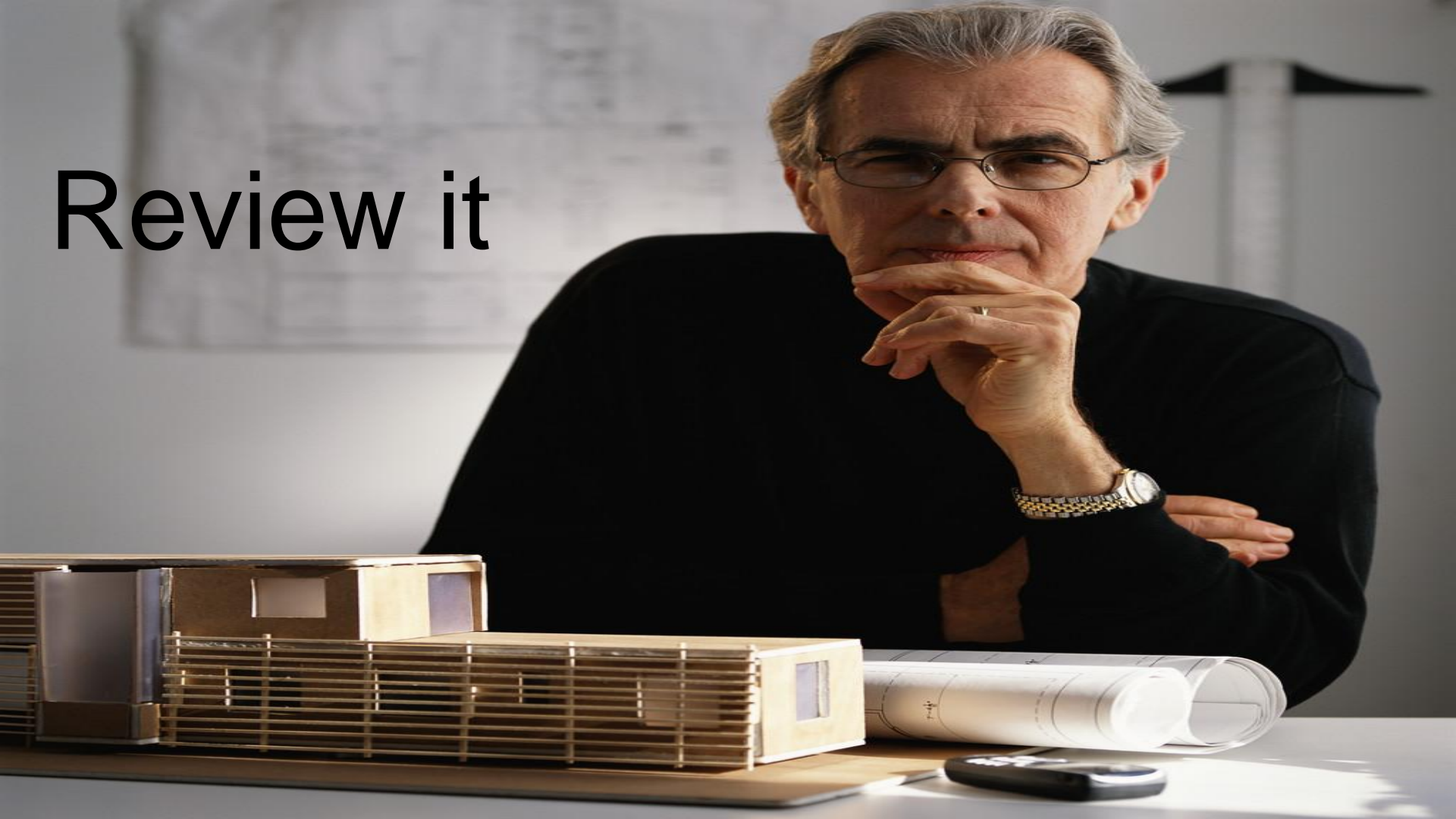
Control



A stage with red curtains and a spotlight. The curtains are pulled back, revealing a stage floor. A bright green spotlight illuminates a circular area on the floor.

Stage it

Review it





Questions?